

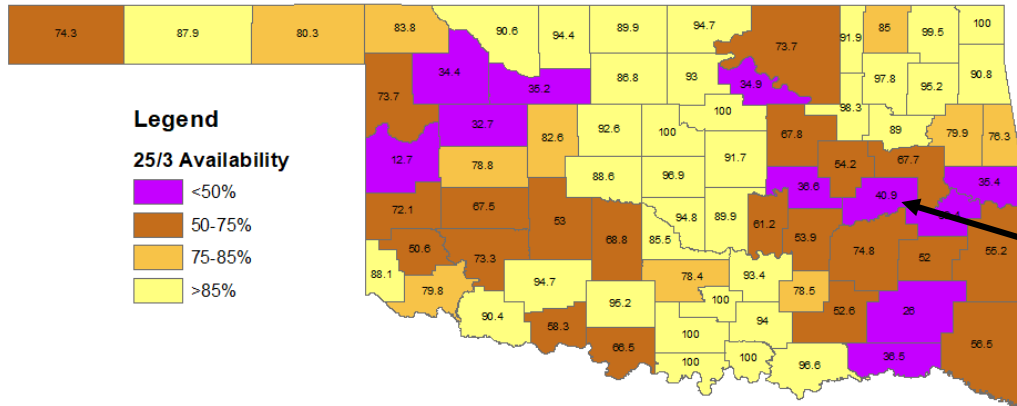
# Example of National Broadband Availability Map (NBAM)

Comparison of FCC Broadband Availability Data  
With Ookla Speed Bins (100m)

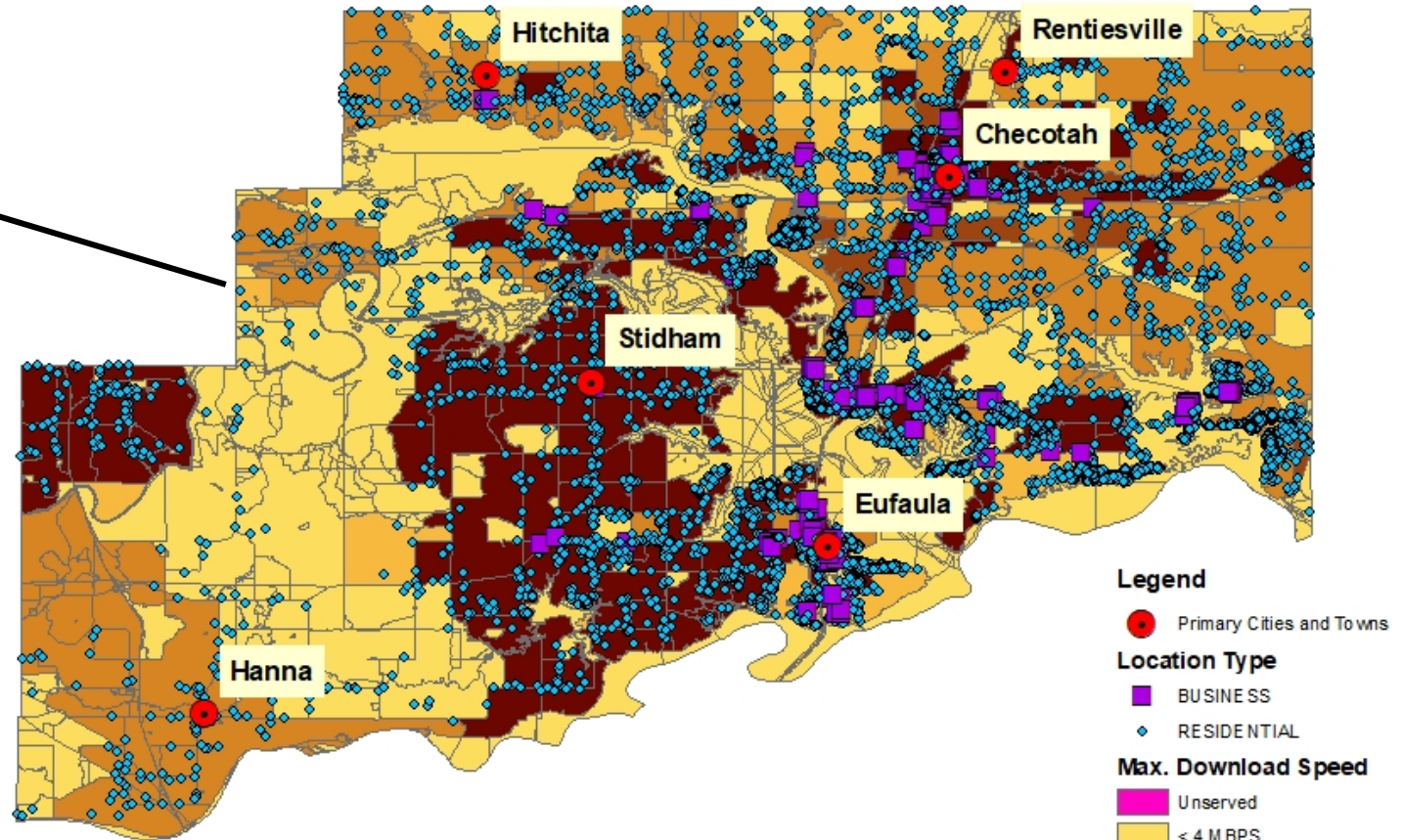
Presentation for Oklahoma Rural  
Broadband Expansion Council (RBEC)  
Dr. Brian Whitacre  
6/16/21

# More Detailed Availability Maps...

## McIntosh County, OK

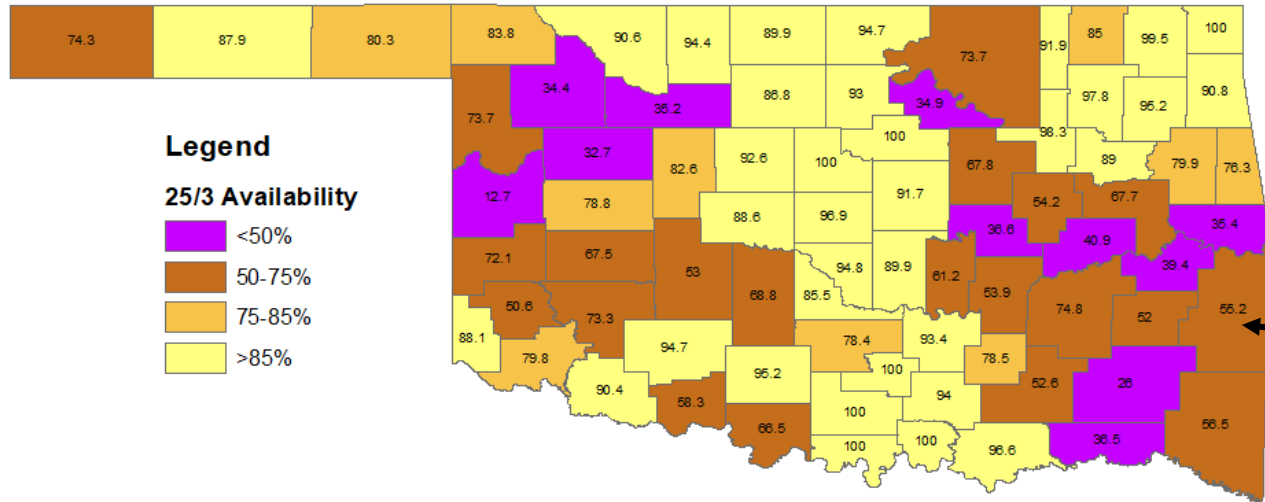


Source: FCC Form 477, Dec. 2019



Sources: FCC Form 477 Data, June 2020  
CostQuest Broadband Serviceable Location Fabric, 2021

# More Detailed Maps...



Source: FCC Form 477, Dec. 2019

## Legend

● Primary Cities and Towns

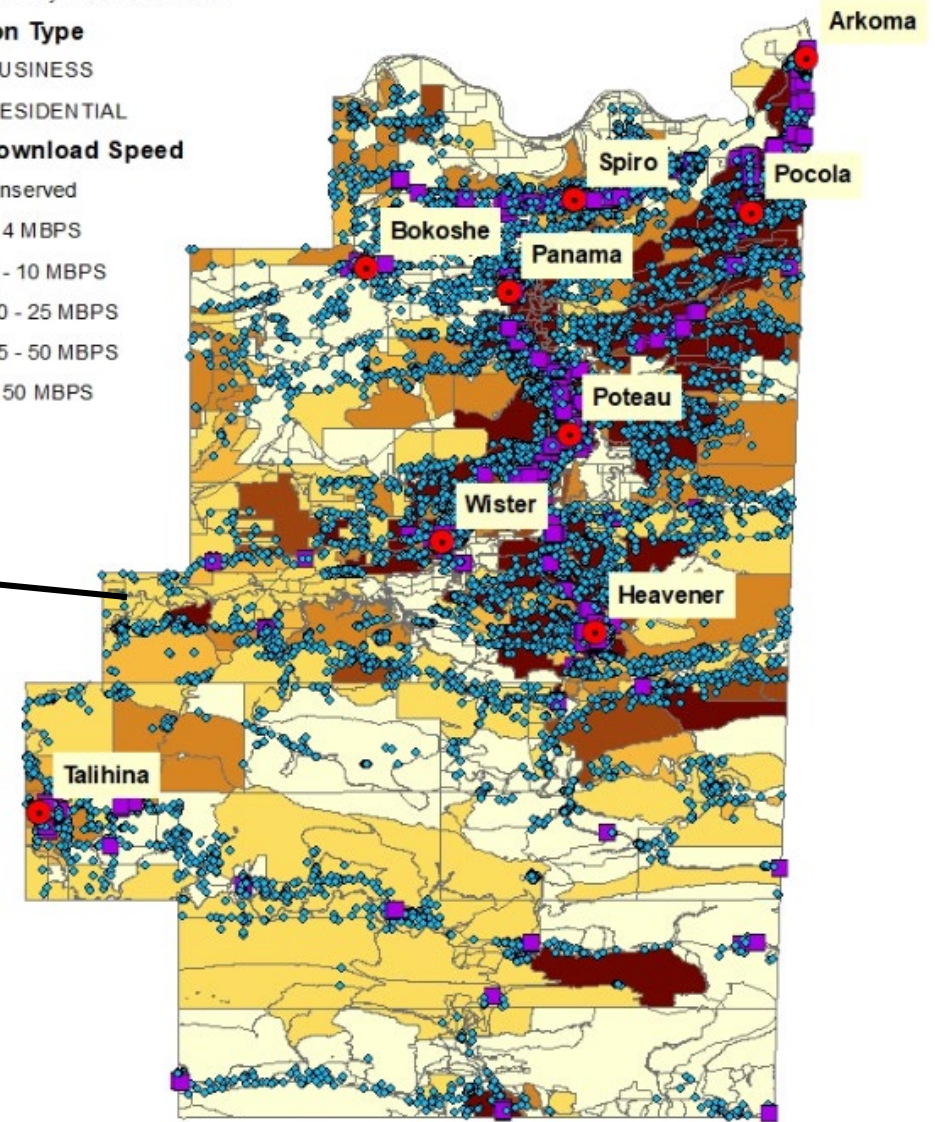
## Location Type

- BUSINESS
- ◆ RESIDENTIAL

## Max. Download Speed

- Unservd
- < 4 MBPS
- 4 - 10 MBPS
- 10 - 25 MBPS
- 25 - 50 MBPS
- > 50 MBPS

## Le Flore County, OK

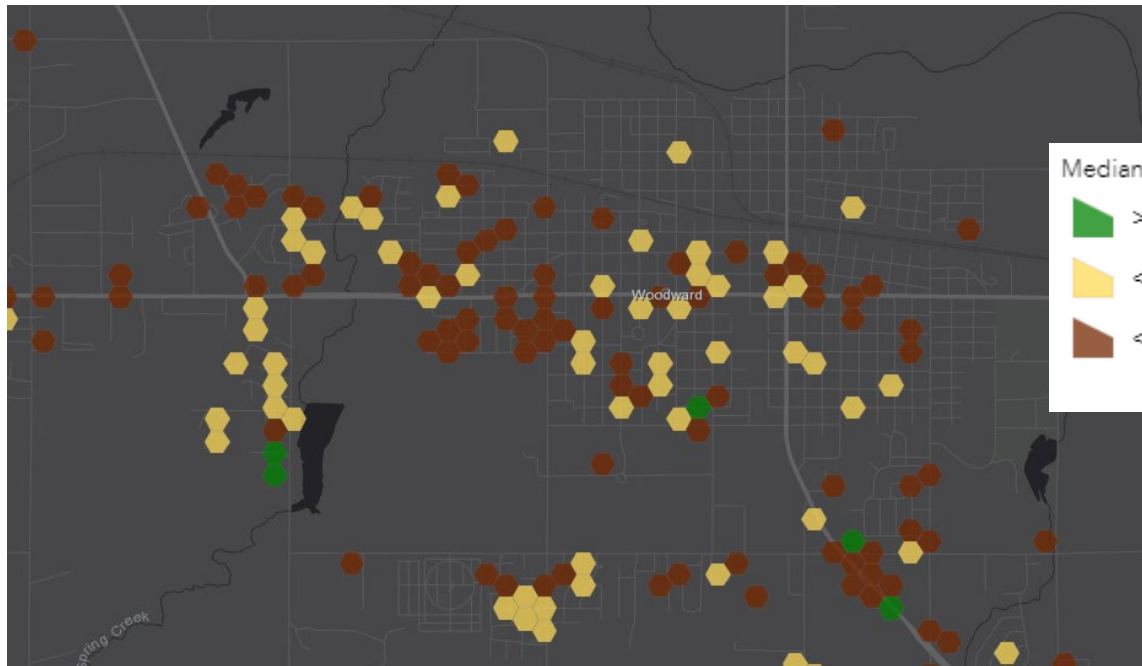


Sources: FCC Form 477 Data, June 2020  
CostQuest Broadband Serviceable Location Fabric, 2021

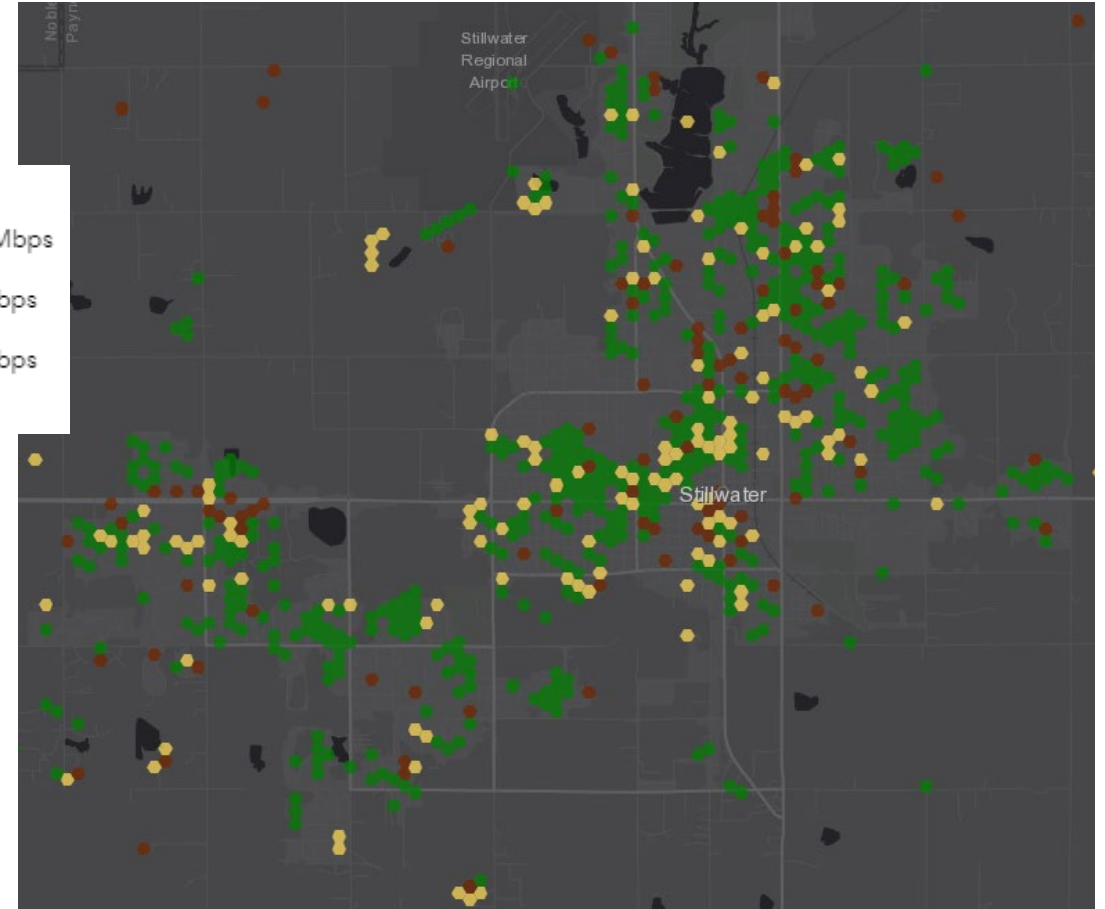


# An Interesting “On-the-ground” Check...

Woodward



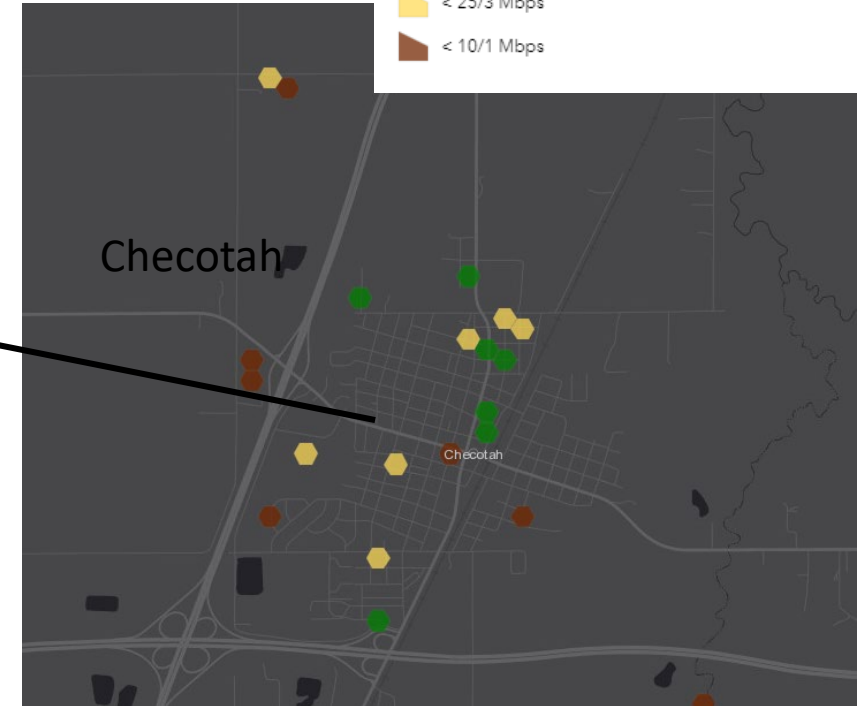
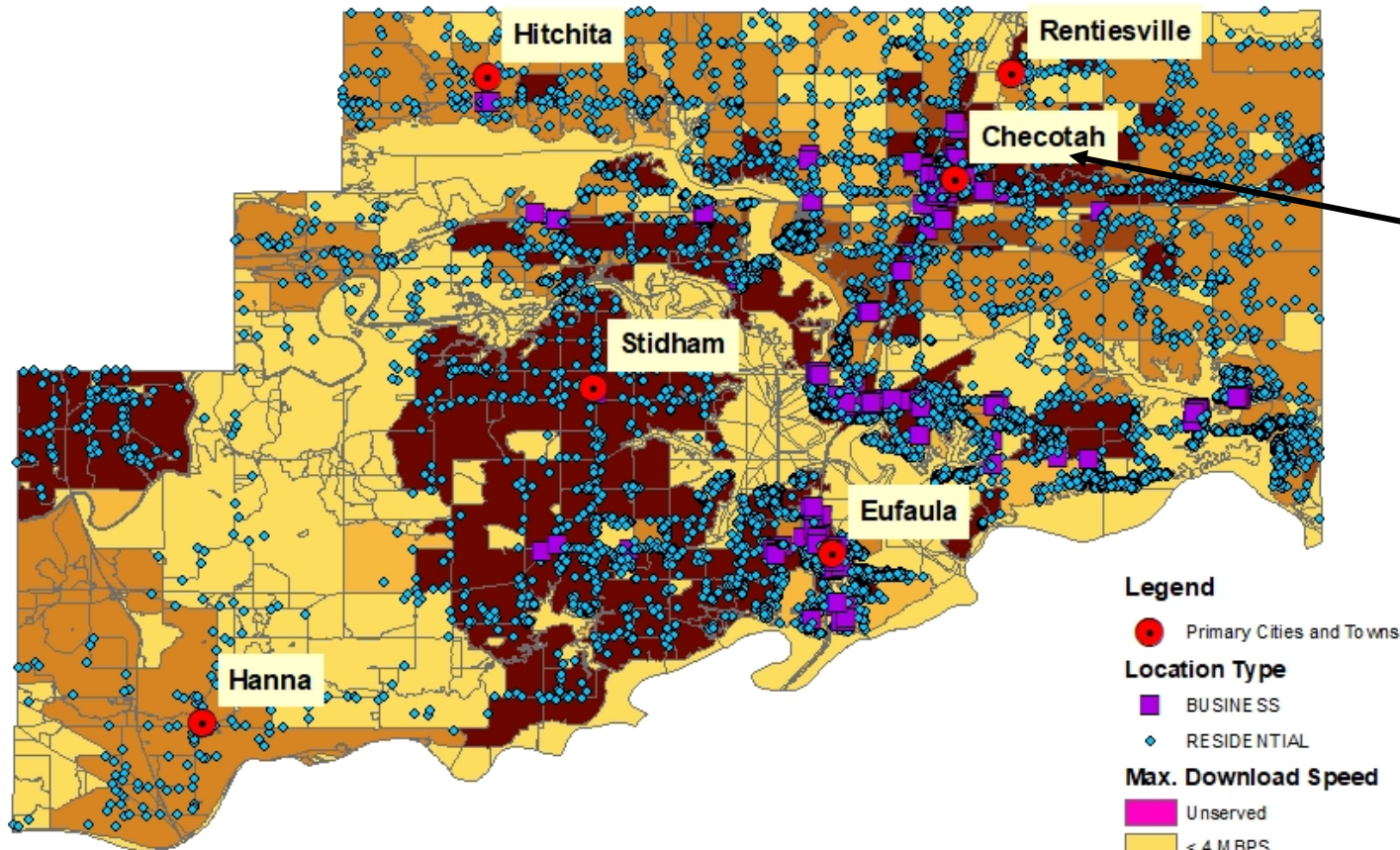
Stillwater



Ookla speed tests (100m bins)  
Show locations with poor  
actual speeds

# More “On-the-ground” checks...

## McIntosh County, OK



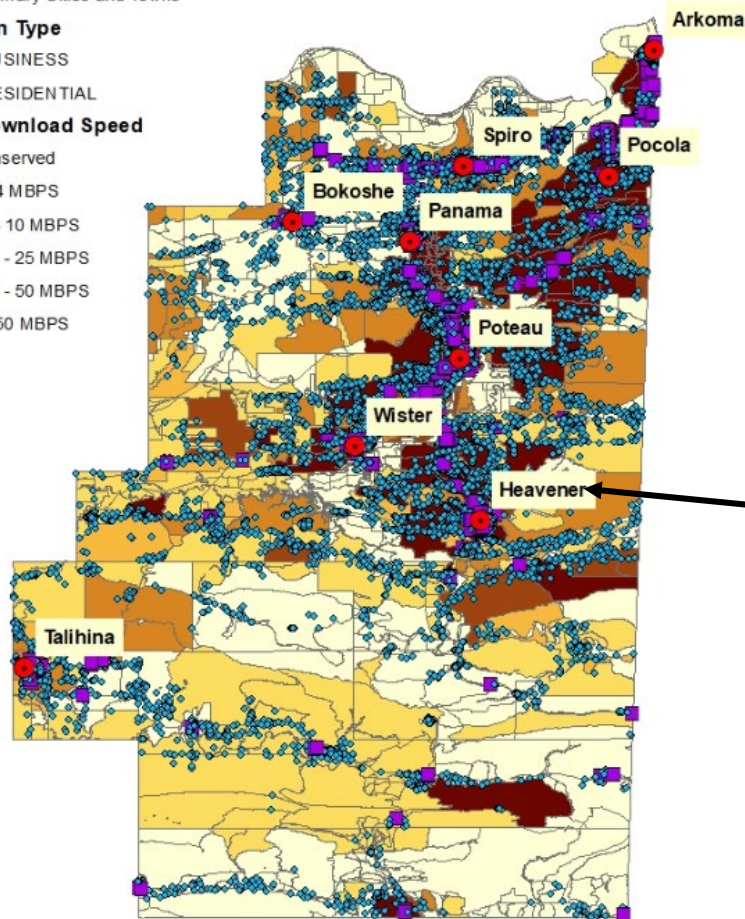
- Legend**
- Primary Cities and Towns
  - Location Type**
    - BUSINESS
    - RESIDENTIAL
  - Max. Download Speed**
    - Unservd
    - < 4 MBPS
    - 4 - 10 MBPS
    - 10 - 25 MBPS
    - 25 - 50 MBPS
    - > 50 MBPS

# More “On-the-ground” checks...

## Legend

- Primary Cities and Towns
- Location Type**
  - BUSINESS
  - ◆ RESIDENTIAL
- Max. Download Speed**
  - Unserviced
  - < 4 MBPS
  - 4 - 10 MBPS
  - 10 - 25 MBPS
  - 25 - 50 MBPS
  - > 50 MBPS

## Le Flore County, OK



## Ookla Fixed Broadband (Wi-Fi) by 100m Bin (Jul - Dec 2019)

- Median Speed
- $\geq 25/3$  Mbps
  - < 25/3 Mbps
  - < 10/1 Mbps

